



Sheffield Square, London, E3

BUTLER  STAG



**Guide Price £500,000 - £550,000**  
**Set within the Sheffield Square**  
**development in Bow, this**  
**immaculately presented 3-**  
**bedroom duplex garden**  
**maisonette offers modern**  
**living across 963 Sq/Ft,**  
**complemented by a garden and**  
**stylish interiors.**



## Leasehold

- Duplex Maisonette
- Garden
- Kitchen Diner
- Large Reception Room
- Over 960 Sq/Ft Of Living Space
- Three Bedrooms
- Modern Interiors
- Down Stairs Toilet

Arranged over two floors, the property has been thoughtfully designed to maximise space and light. The welcoming entrance leads into a spacious reception/dining area, finished with hard wood flooring and direct access to a garden area.

The charming country-style kitchen is designed with both character and functionality in mind. Featuring an abundance of cabinets and generous countertop space, it offers excellent storage and practicality for everyday living. Ornate floor tiles add a touch of timeless elegance, while the thoughtfully designed layout incorporates a welcoming seating area.

Upstairs, three well-proportioned bedrooms provide flexible accommodation, ideal for families, professionals, or those seeking a home office. A modern family bathroom, along with ample storage throughout, further enhances the sense of comfort and convenience.

Residents of Sheffield Square benefit from communal areas and a friendly community atmosphere, all within easy reach of local amenities, excellent schools, and the vibrant cafés, shops, and green spaces of East London. Bow Road Underground and Bow Church DLR stations are close by, offering swift links into Canary Wharf, the City, and beyond.





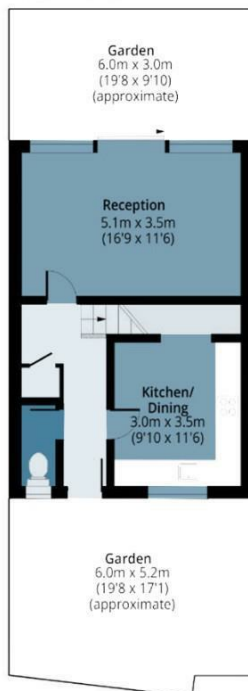
## Sheffield Sqaure

Approx. Gross Internal Area 89.46 Sq M ( 963 Sq Ft )

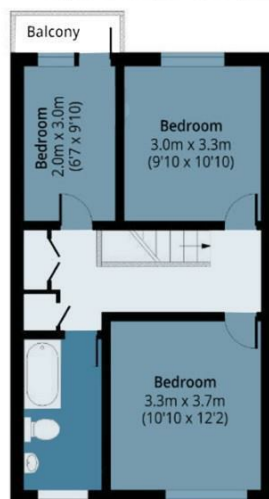
BUTLER & STAG



**Ground Floor**  
Approx. 41.06 Sq. meters (442 Sq. feet)



**First Floor**  
Approx. 468.40 Sq. meters (521 Sq. feet)



Measurements are approximate and for illustration purposes only. While we do not doubt the accuracy and completeness, we advise you conduct a careful independent assessment of the property to determine monetary value.  
© @modephoto.uk www.modephoto.co.uk

IMPORTANT NOTICE - These particulars have been prepared in good faith and they are not intended to constitute part of an offer or contract. We have not performed a structural survey on this property and the services, appliances and specific fittings have not been tested. All photographs, measurements, floor plans and distances referred to are given as a guide and should not be relied upon.

BUTLER & STAG

☎ 020 8102 1236

🏠 508 Roman Road, Bow, London, E3 5LU

✉ bow@butlerandstag.com

www.butlerandstag.uk